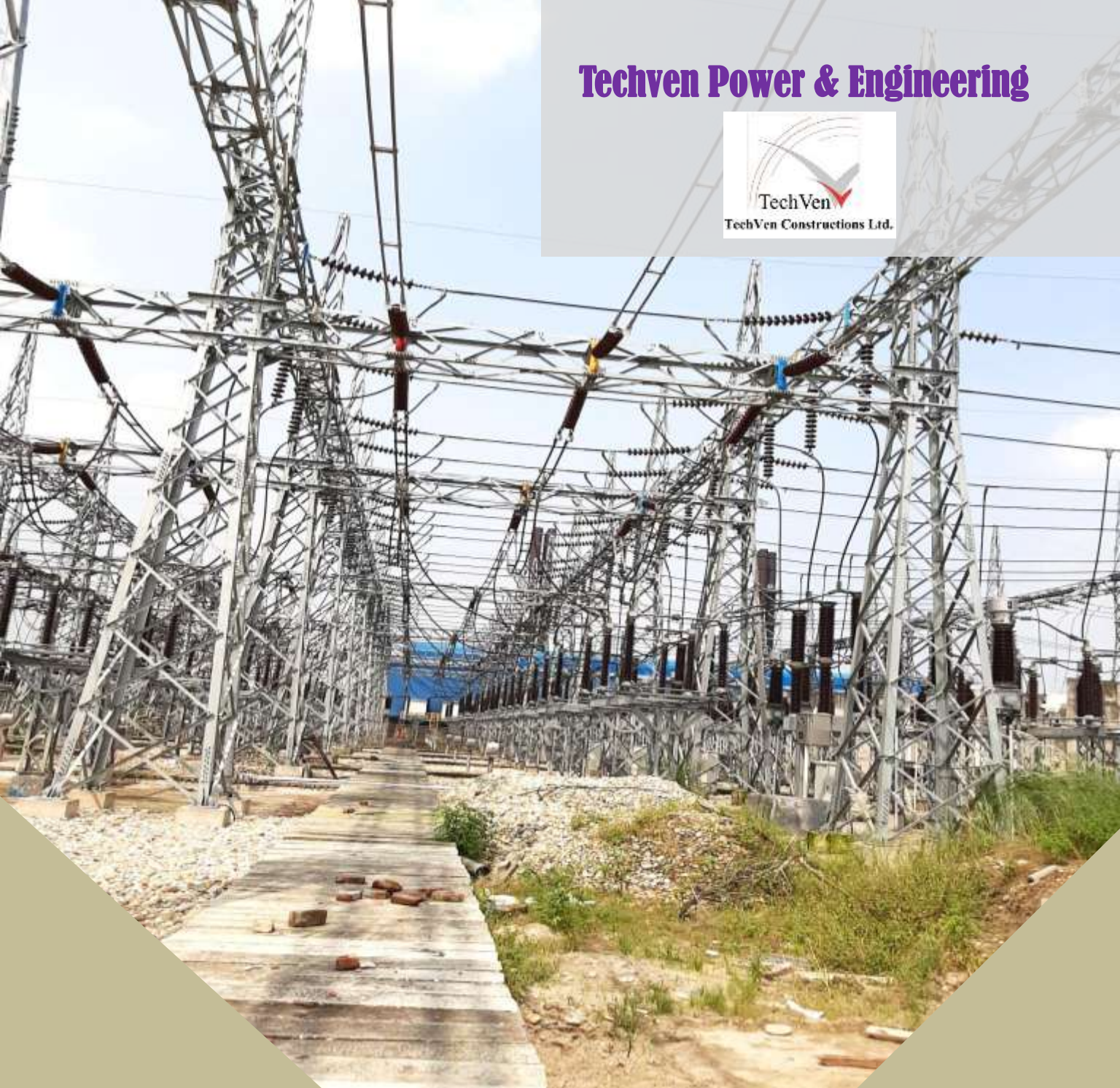


**Techven Power & Engineering**



**KEEPING THE  
STANDARD HIGH  
QUALITY  
ENGINEERING IN  
POWER SECTOR**

**COMPANY  
PROFILE**





## About Us

Techven Power & Engineering is the part of Techven Constructions Ltd was established with a view to carrying on the business of advanced diversified technology based Sub-Station projects, power and solution, focuses on improving industrial production and people life style through meaningful innovation and engineering in the area of low, medium and high voltage power transmission and distribution, sub-station design, erection, testing and commissioning, sub-station maintenance, repair, asset management.

# Our Mission

Settlement of standard in sub-station engineering and practical integration of modern power technology with existing system and build a strong supply chain with local client. Working together with our customers, safely and responsibly, we bring experience, methods, motivated teams and in-house designed equipment to IMAGINE what is possible, THINK through the solution and ACT to deliver

## Our Vision

Quality implementation of latest technology in power sector for industrial growth and improvement of people's life style by utilizing limited resources but appropriate and justified for the existing power system of our country.



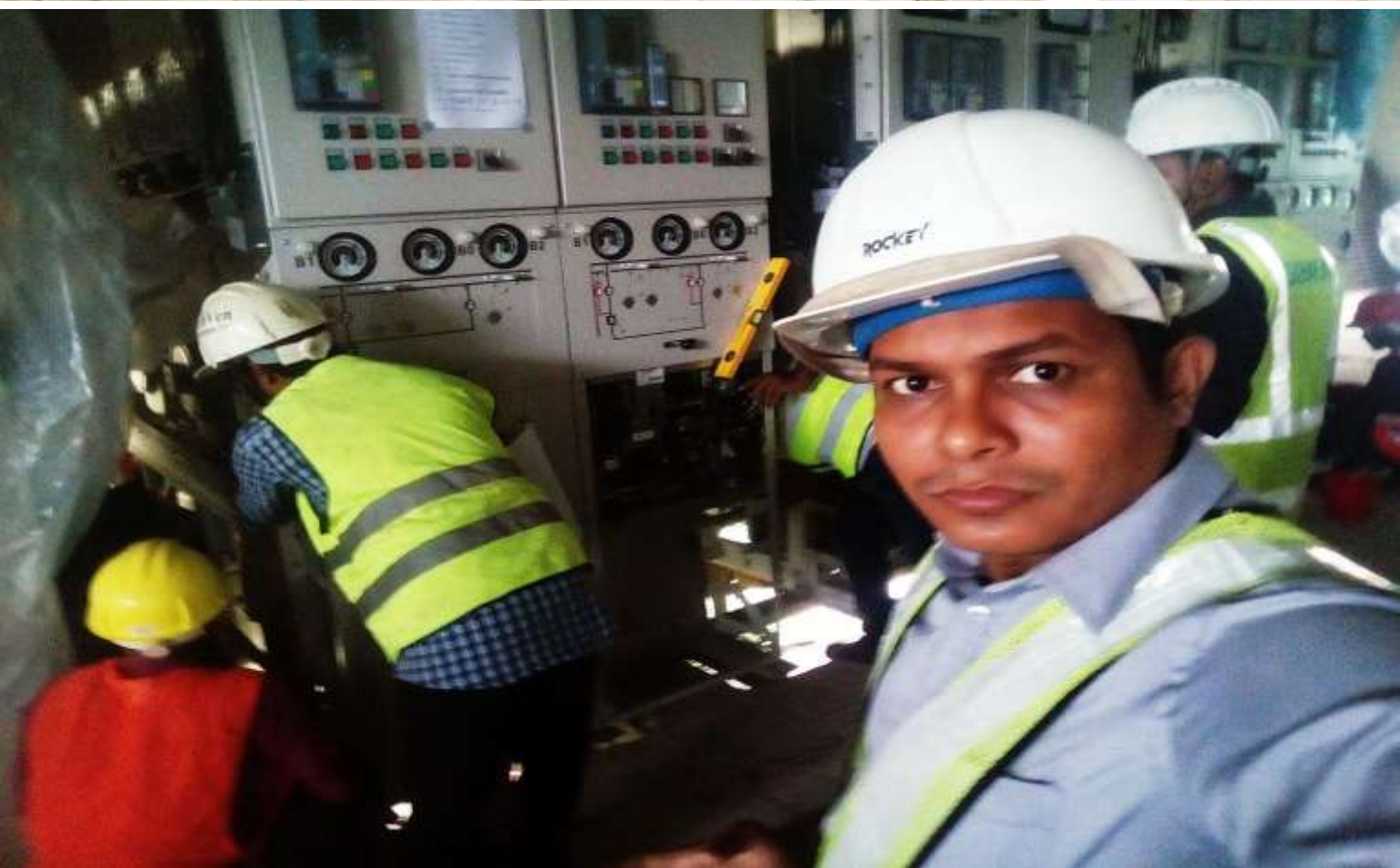


# Our Experience

More than 7 year's experience in power engineering up to 230 KV system. Installation, testing and commissioning of AIS & GIS Substation Starting from 11 KV, 33 KV, 132 KV, 230 KV including outer standings projects of various reputed private companies and utility departments.







**Fig: Our Ongoing Sub-Station Project work to meet the Implementation.**



**We have quality experience and expertise to implement the project successfully.**

The safety of our personnel and all external workers who are involved in our work is very important to us. we apply high safety standards. Thoroughly training and continuously retraining our employees in the applicable rules and procedures, we can maintain operational control during high-risk activities. We remain committed to anchor safety and quality even deeper in all our activities because we strongly believe that prevention is always better than the cure.



**Fig: After Successful Charging DESCO Team.**





Fig: Successful Battery Installation.

Fig: Our Ongoing Sub-station Project work to meet the Implementation.

# Our services



## Turnkey Solution of Sub-station

11KV, 33KV, 132KV, 230KV GIS and AIS substation Design, Supply, Erection, Testing & Commissioning



## Testing & Erection Testing & Commissioning

11KV, 33KV, 132KV GIS and AIS substation Erection Testing & Commissioning



## XLPE Cable GIS/AIS Termination

Jointing, HiPot-head Termination of GIS /AIS 11KV, 33KV 132KV Sub-station



## Maintenance, Management and Control

Yearly maintenance of substation: 11 KV, 33KV, 132 KV





## Troubleshooting and Site Support

We have enough expertise to troubleshooting and site support in case of any fault occurs, unwanted trapping and damages at any period.



## Supply of Sub-Station Equipment

1. Power Transformer, distribution & Auxiliary transformer
2. Breaker, DS, LA, CT, Switchgear,
3. Control Relay , Meter etc.
4. Power Cable, Control Cable, ACSR Conductor
5. ACDB/DCDB, Battery Bank, Battery charger
6. Solar Panel Installation & testing
7. 132KV, 33KV & 11KV all Galvanized Structure making & fitting



## Dismantling, Loading & Unloading and Transportation

11KV, 33KV, 132KV GIS and AIS, Galvanized Structure of substation

# Our Test Equipment

Serial	Name of Equipment	Brand	Model No	Country of Origin
1	Primary Current & Voltage Injector	OMICRON	CPC-100	Austria
2	2000A Current Booster	OMICRON	CPCB1	Austria
3	Relay Testing Set	OMICRON	CMC-356	Austria
4	Tan Delta Test Set	OMICRON	CPTD1	Austria
5	Breaker Analyzer	MEGGER	EGIL	UK
6	Digital Micro Ohm Meter	MEGGER	DLRO-600	UK
7	Digital Earth Tester	MEGGER	DET2/2	UK
8	260KV AC/DC High Voltage Test Set	BAUR	PGK 260 HB	Austria
9	Digital AVO Meter	KYORITSU	1009	Japan
10	Digital Phase Indicator	KYORITSU	8031	Japan
11	Low Range Clamp Meter	KYORITSU	2431	Japan
12	Digital Insulation Tester	KYORITSU	3125A	Japan
13	Digital Clamp Meter AC+DC	HIOKI	3288	Japan
14	Primary Current Injector	KYORITSU	RSE-B-500	Bangladesh
15	Transformer Oil Centrifuging Machine 8000l/Hr	NEUTRONICS	N-8K	India
16	Oil BDV Tester	NAKIN	II-JII-100	China
17	Vector Group (Phase Displacement)	--	--	European
18	Magnetic Balance Tester	--	--	European
19	Hipot Tester (AC & DC)	--	--	European
20	Winding Resistance Tester	--	--	European
21	Contact Resistance Tester	--	--	European





**Fig: Test Equipment for the use in Electrical Field.**

# Our Erection Tools

ITEM NO.	DESCRIPTION OF ITEM	QUANTITY
1	Vacuum Pump (Dilo Kit)	1
2	Vacuum Cleaner	1
3	SF6	1 Bottle
4	Hydraulic Jack	2 Sets
5	Hydraulic Oil	0.5 L
6	Roller Pipe	7 Nos
7	Torque Wrench	1 Set
8	Rump	4 Nos
9	Tommy	2 Nos
10	Ratchet	1 set
11	Hand Chain Pulley	2 set
12	F-Clamp	2 set
13	Torx Ellen Key	2 set
14	Dali & Ring Wrench	12 Sets
16	Iron Drill	1 Set
17	Matam	1 Set
18	Round File	1 No
19	Sprit Level	1 No
20	CTC	8 L
21	Crane	1Nos(20Ton)
22	Jhut	Lot
23	Handicraft	Lot
24	Ladder, hand globes, measuring tape, screw driver	Lot





**Fig: Erection Tools used in the Field of Electrical.**

## Our Valued Projects

SL NO	NAME OF PROJECT
1	Installation, Testing and Commissioning of 33/11 kV, 3x20/28 MVA Sub-Station at Tejgoan Project.
2	Installation, Testing and Commissioning of 33/11 kV, 3x20/28 MVA Sub-Station at Lake City Project.
3	Installation, Testing and Commissioning of 33/11 kV, 3x20/28 MVA Sub-Station at Barua Project.
4	Installation, Testing and Commissioning of 33/11 kV, 3x20/28 MVA Sub-Station at Saturkul Project.
5	Installation, Testing and Commissioning of 33/11 kV, 3x20/28 MVA Sub-Station at Tongi-1 Project.
6	Civil & Small Power & Galvanized Structure work of 132/33 kV, Sub-Station at Rajendrapur Project.
7	Civil & Small Power & Galvanized Structure work of 132/33 kV, Sub-Station at Motijheel DPDC Project.





**Fig: Our Project Gallery.**



# Techven Power & Engineering



TechVen Constructions Ltd.

## CONTACT US

Techven Power & Engineering

### Office Address:

92/A, Masjid Road, Banani DOHS,  
Dhaka-1213

### Website:

[www.techvenbd.com](http://www.techvenbd.com)

### E-Mail:

[info@techvenbd.com](mailto:info@techvenbd.com)

### Hotline:

+88-02-8715837, +88-02-8715839

Fax: +88-028750917